

March 2015

V9xx/SN6xx Series Cameras Firmware

General Description

Vicon has released the latest firmware for a list of V9xx and SN6xx series of cameras. The accompanying Smart Manager discovery tool version 2.3.2.9 does not change. It is important to remember that when these cameras are used, ViconNet version should be minimum 6.6.71 (SP2).

The updated firmware is as follows:

Camera	Older Firmware	Newest Firmware
V-CELL-IP; V660V-P (Europe)	T2_V2.7.3	T2_V2.7.8
V920D and V921D	T4_V2.1.6	T4_V2.2.4
V922D, V923D, V-CELL-HD, V921B, V922B, V923B, CE202D-N and CE202D-WN	T6_V1.9.4	T6_V1.9.9
VN-901T encoder	T1_V3.0.3	TBD
V905-CUBE	T5_V2.4.3	T5_V2.4.8
CE102D-NIR and CE102B-NIR	T8_V1.4.3	T8_V1.4.9
SN663V, SN680D-WNIR	X1_1.4.9	X1_1.5.2
SN663V-A, SN680D-A-WNIR	X2_1.2.1	X2_1.2.3

Vicon Production

The latest firmware and discovery tool are available on Vicon's website. A link is provided in the installation section of this document. Production will switch over to the new firmware for new cameras.

Vicon strongly recommends updating the cameras to this firmware to receive the most stable and secured solution.

Firmware Updates

Long Security Certificate Support

This firmware now supports security certificates of up to 2048 bit.

Enhanced Web Security

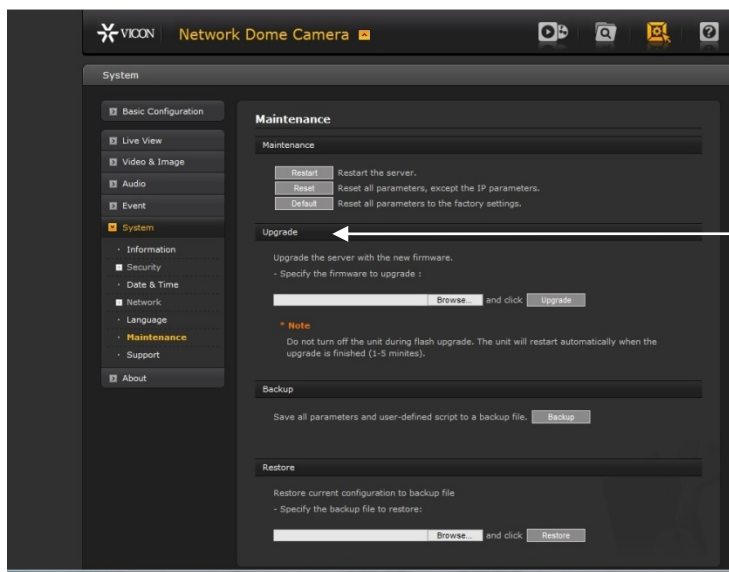
Various security updates were made to the camera to better protect from them unauthorized attempts for connection.

Installing the Updated Firmware

The latest firmware is available on Vicon's website from the Support tab – Technical Support – Software Downloads – Vicon Network Camera Software; a link is provided below.

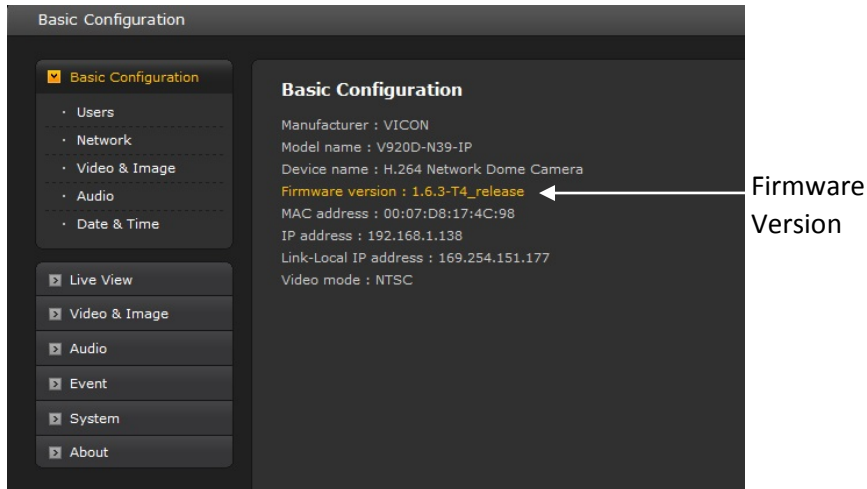
<http://www.vicon-security.com/support-technical-support-software-downloads-network-cameras.htm>

Download the firmware to your PC. Go to the camera's Maintenance screen.



Upgrade

Go to the Upgrade section and use the Browse button to locate the firmware on your PC. Press the Upgrade button. During the upgrade process, do not turn off the power to the camera. Wait at least 5 minutes and access the camera again. The new firmware should be installed. This can be checked from the Basic Configuration screen.



Basic Configuration

Basic Configuration

Manufacturer : VICON
Model name : V920D-N39-IP
Device name : H.264 Network Dome Camera
Firmware version : 1.6.3-T4_release
MAC address : 00:07:D8:17:4C:98
IP address : 192.168.1.138
Link-Local IP address : 169.254.151.177
Video mode : NTSC

Firmware Version