
Virtual Matrix Display Controller Installation Guide

Topic	Page
General	2
Prerequisites	2
Contents of Installation Package	3
Installation	4
Registration	11

General

This manual describes how to install the Virtual Matrix Display Controller (VMDC) software. It also provides instructions on upgrading a prior version of the VMC/VMDC software to VMDC Version 7.x

Prerequisites

The following are minimum hardware and operating system requirements for installation.

Windows 7

Operating System: Microsoft® Windows® 7 Ultimate.

CPU: Intel® Core™ i7-930 processor.

Motherboard: GIGABYTE GA-X58A.

BIOS: X58A-UD3R F5 or X58A-UD3R FA.

RAM: 4 GB.

Hard Drive: 250 GB minimum.

Video Card: Sapphire ATI HD 4650 with 1 DVI/HDMI and 1 VGA output each.

Power Supply: 750 W minimum.

Windows XP

Operating System: Microsoft Windows XP Professional or Embedded, SP 3.

CPU: Intel Core™ 2 Duo 3 GHz minimum.

RAM: 2-4 GB.

Hard Drive: 250 GB minimum.

Power Supply: 510 W minimum.

Notes:

1. Do not install the VMDC software on a machine running ViconNet®.
2. On Windows 7, User Authorization Control must be turned off.
3. The minimum hardware and operating system requirements are subject to change. For the latest requirements, refer to the Tech Support section on Vicon's website at www.vicon-cctv.com.

Important

Installation on a Windows XP machine, including prior versions of the VMDC software, installs the Virtual Matrix Control software only and does not provide any internal decoding capability. The Vicon VN-DECODER-2V7 hardware decoder(s) or another VMDC running Windows 7 will be required to direct the video to the monitor(s).

Contents of Installation Package

The installation CD contains the VMDC software and a license. The system provides for operation of 2, 4 or 6 monitors. Two monitors can be driven per video card; therefore a total of 3 cards would be required for 6 monitors.

Installation

The software is typically installed from the VMDC Installation CD and will autorun once the CD is inserted in the drive.

Important Note

When an upgrade from an older version is being performed, be sure to upgrade all the VMDCs and decoders that are set with receive only (or RX monitors) prior to updating the main units running the VMDC GUI.

Notes

The installation described below shows a typical Windows 7 installation. The installation is essentially similar for a Windows XP machine and for an upgrade to the VMC software, with the differences noted in the procedure.

Screens may vary in look but are the same or similar in functionality; follow onscreen prompts.

1. Insert the CD in the drive and autorun will begin. If autorun does not run, use Windows Explorer to navigate to the CD drive and click it to run the file. Click on the **Software** tab.



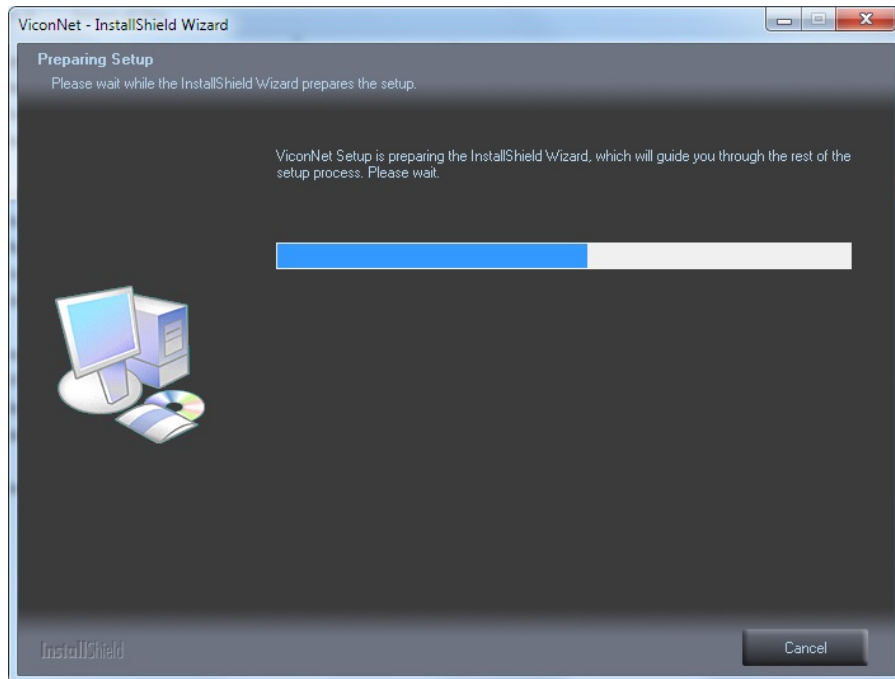
2. The ViconNet Virtual Matrix Display Controller (VMDC) software selection screen displays. Click the **ViconNet VMDC Version 7 Software** link.



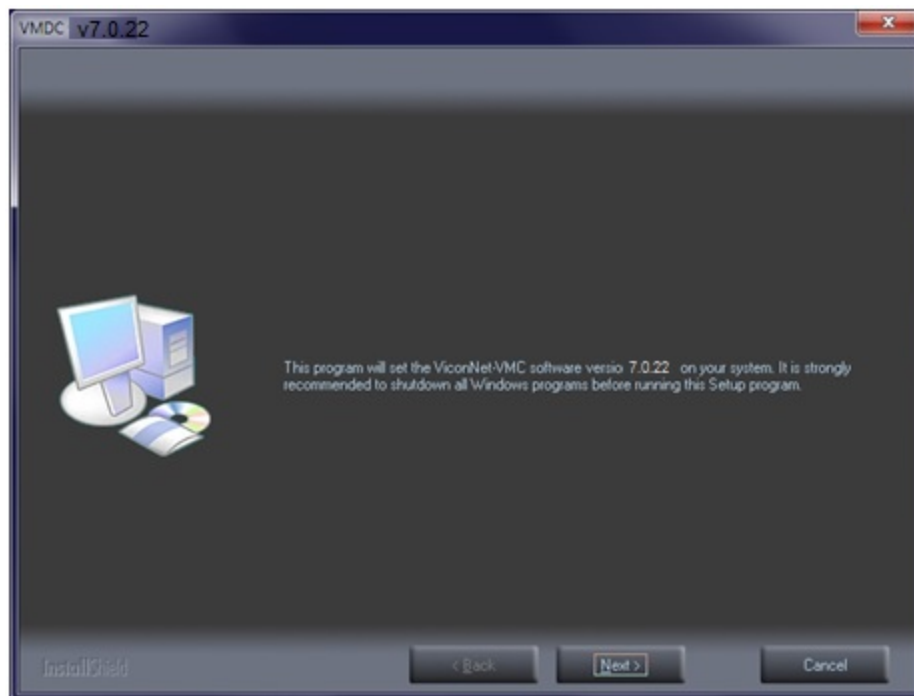
Important Note

The Installation and Upgrade process may require several reboots. Do not be alarmed; this is part of the normal upgrade process and can take some time, but the application will finally start up. After the first reboot, VMDC will start again; it may appear that the process is complete but VMDC will not have been upgraded. Several messages may appear; follow the instructions to reboot if necessary. Several reboots may occur, which can be lengthy. After the final reboot the upgraded VMDC will start; although the initialization may take a while.

3. The Preparing Setup screen displays.

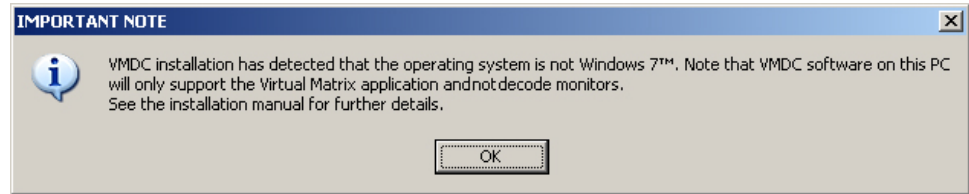


4. After setup loads, the VICON-ViconNet-VMDC SW Installation screen displays.

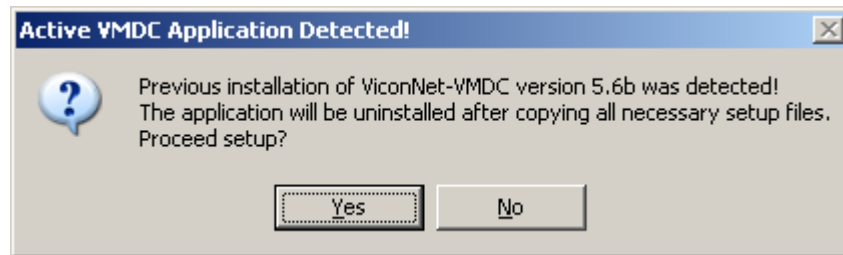


5. Click **Next**.

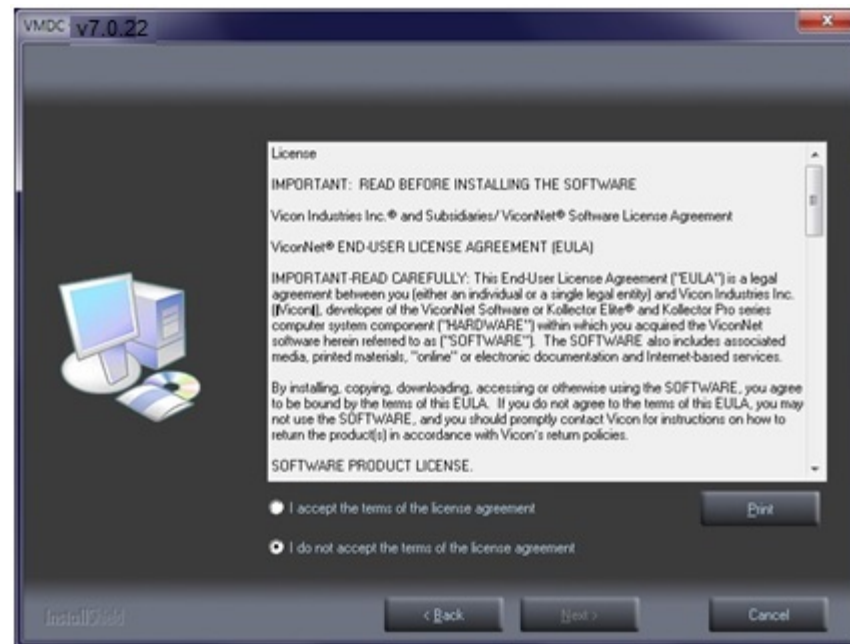
Note: If the software is being installed on a Windows XP machine, the following screen will display. Click **OK** to continue installation.



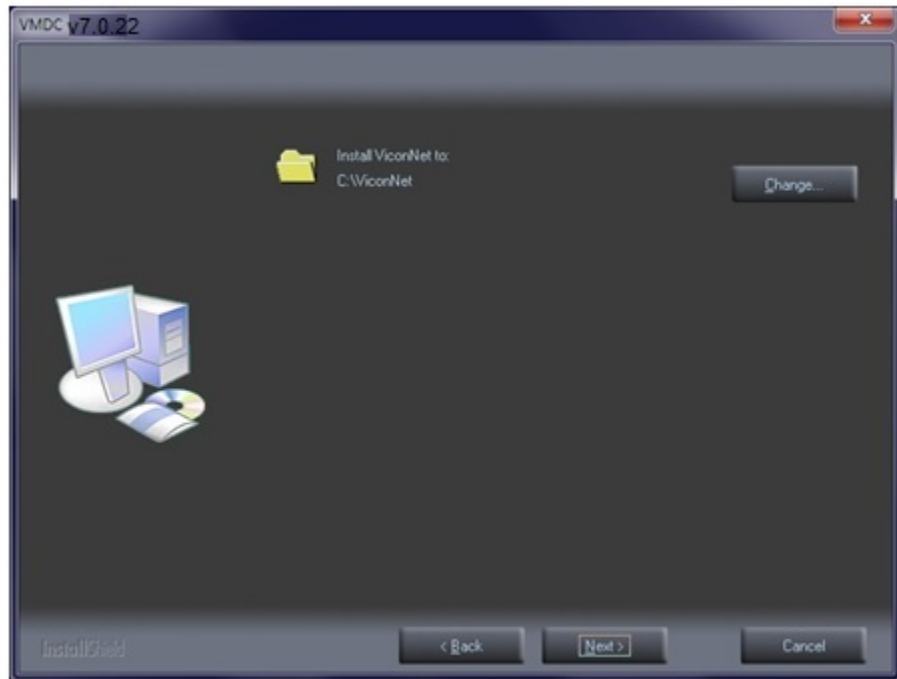
Note: If you are upgrading a prior version of the VMC software, the following dialog box displays:



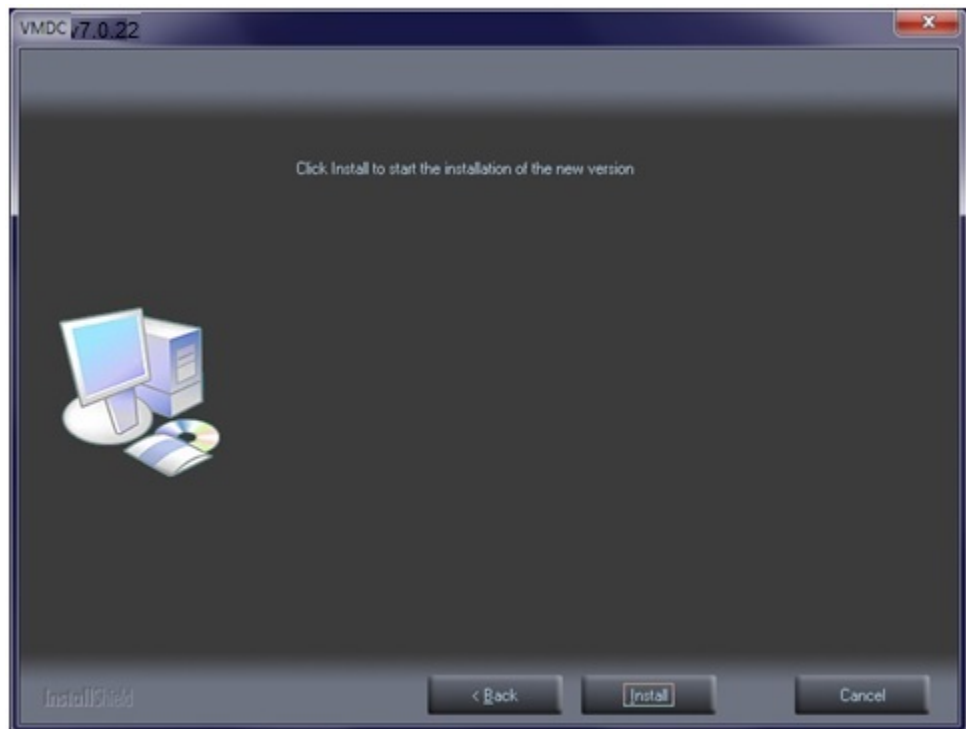
6. Click **Yes**. The old software will automatically be uninstalled and the VMDC software will be installed along with any required drivers or framework packages. Proceed to step 13 of this procedure.
7. The License Agreement displays (new installations). Select the *I accept* radio button and click **Next**.



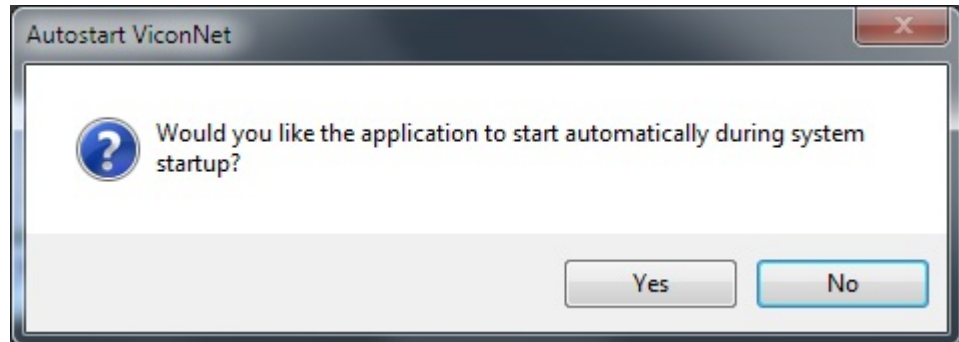
8. Select the folder where the VMDC software is to be installed, or choose the default folder. Click **Next**.



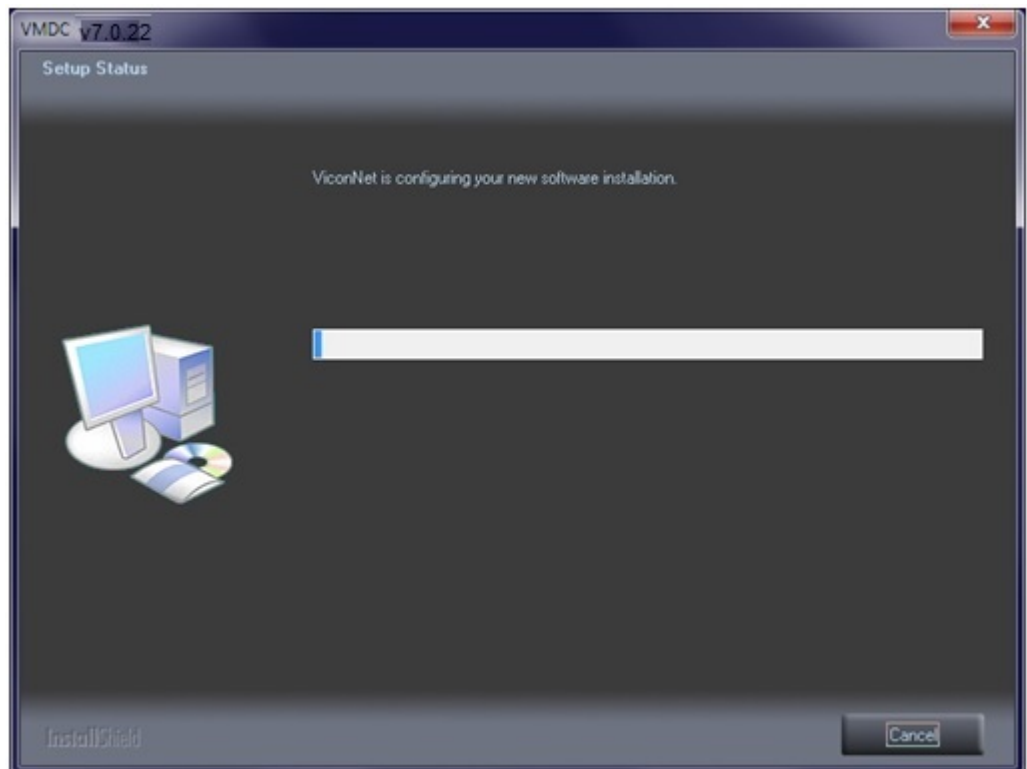
9. Click **Install**. The installation begins. Note that the Windows XP screens will look different than the Windows 7 screens.



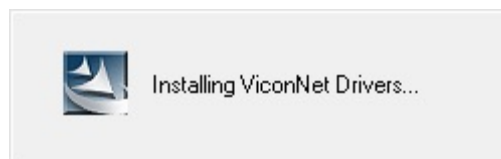
10. The Autostart ViconNet dialog box displays. Click **Yes**.



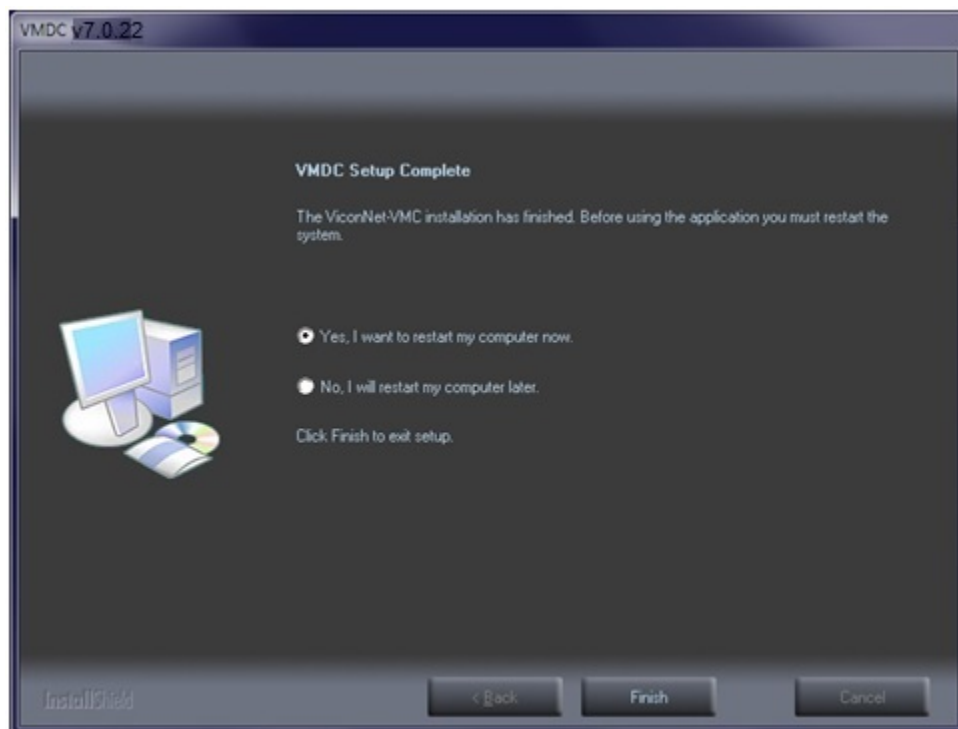
11. The installation continues.



12. Several screens display during this process, including installing VNAgent and ViconNet Drivers.



13. The VMDC Setup Complete screen displays. Click **Finish** to reboot the system. If you selected **Yes** to have the unit restart in an unattended installation, this screen will not display. The system will reboot automatically.

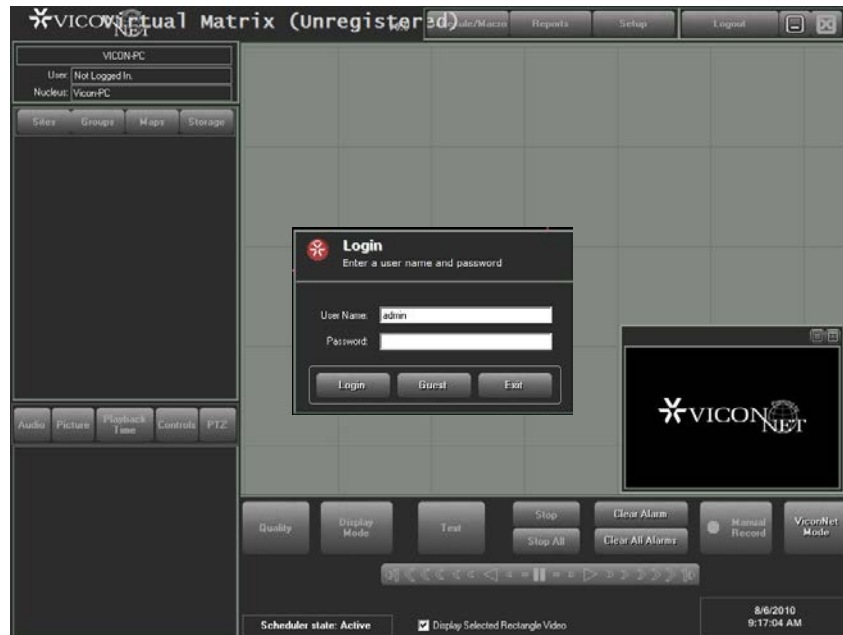


14. After the system reboots, the Virtual Matrix icon will display on the desktop.



15. Click the icon to start the VMDC application.

16. The Virtual Matrix application displays.



Registration

If you have a factory-certified VMDC unit with preinstalled software, VMDC software is pre-registered and will automatically start that way on boot-up. If the new installation is on a customer-supplied unit, the VMDC software must be registered to access the full functionality of the Virtual Matrix application; a license is provided with the software kit. Prior to registration, it will only function as a viewer.

Go to Vicon's website at www.vicon-security.com or go to <http://ftp.vicon-security.com/regkeyoutside> (this URL can be used if registering from a mobile device). At the website, click on the ViconNet Registration button (link) and follow the online instructions.

If you encounter any difficulties in the registration process, call Vicon at 1-800-645-9116 (US only) or 1-631-952-2288. Select the software registration option (Hours of Operation: Monday-Friday, 8:30 AM - 5:00 PM EDT).

The directions for opening the Registration Dialog Box in the software are located in Chapter 3 of the Software Manual for ViconNet under the heading "Registering Your System." Be sure to open this dialog box before calling. You will be asked for information found in the registration dialog box as well as the information contained on the License ID label.

Note: After entering the License ID and Password, the License Information Form will display. Fill this form out accurately. This is how you will be identified in Vicon's database for future reference. In the serial number field, enter the serial number of the PC on which the software is being installed.