

## 9xx Series Cameras Firmware

### General Description

Vicon has released the latest firmware for a list of 9xx series of cameras. The accompanying Smart Manager Discovery Tool version 2.3.1.6 is also been provided. It is important to remember that when these cameras are used, ViconNet version should be minimum 6.6.71 (SP2).

The updated firmware is as follows:

<b>Camera</b>	<b>Older Firmware</b>	<b>Newest Firmware</b>
V-CELL-IP and V660V-P (Europe)	V2.3.9	V2.5.8
V920D and V921D	V1.6.3	V1.9.1
V922D, V923D	V1.3.1	V1.6.1
V901T encoder	V3.0.0	V3.0.3
V905-Cube	V2.0.4	V2.2.5
CE202D-N and CE202D-WNPT	-NR-	V1.6.1
CE102D-NIR and CE102B-NIR	-NR-	V1.2.1

### Vicon Production

The new firmware and Discovery Tool are available on Vicon's web site. A link is provided in the installation section of this document.

This is not a mandatory update and users who do not require updates listed below may stay with the current firmware.

### Firmware Updates

#### ONVIF Compatibility

This firmware is compliant with ONVIF specification 2.3.

#### HD Express Compatibility

This firmware supports use of these cameras with all models of HD Express including motion detection and stream settings from the HD express (pending a firmware update to HD express as well).

#### AE and D/N default settings improvement

Updated default values for AE and D/N.

#### New CE cameras support

New CE line cameras are supported on ViconNet and HD express with these firmware and discovery tool

# Vicon Release Notes

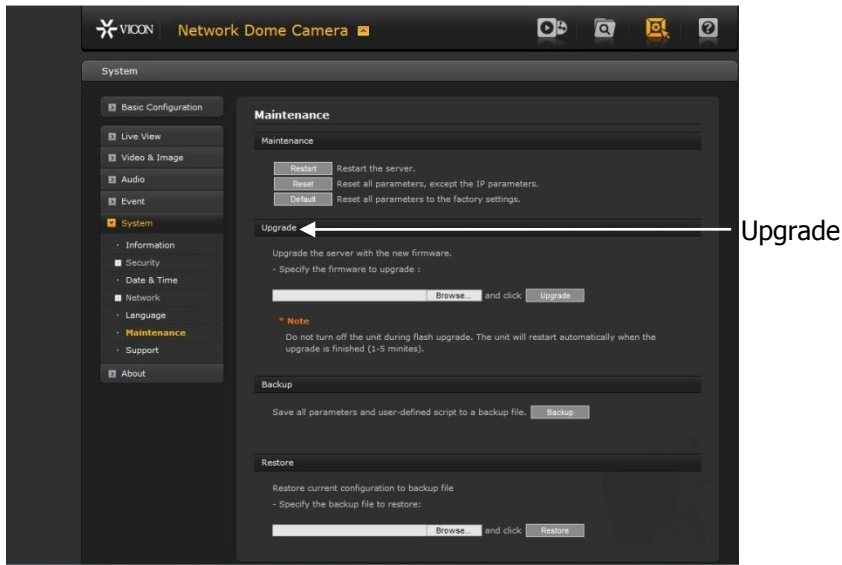
## Installing the Updated Firmware

The latest firmware is available on Vicon's website from the Support tab – Technical Support – Software Downloads – Vicon Network Camera Software; a link is provided below.

<http://www.vicon-security.com/support-technical-support-software-downloads-network-cameras.htm>

You may use the Smart Manager discovery and update tool to perform the update for multiple cameras at a time (see Smart Manager manual for details) or update directly from the camera's web interface as described below.

Download the firmware to your PC. Go to the camera's Maintenance screen.



Go to the Upgrade section and use the Browse button to locate the firmware on your PC. Press the Upgrade button. During the upgrade process, so not turn off the power to the camera. Wait at least 5 minutes and access the camera again. The new firmware should be installed. This can be checked from the Basic Configuration screen.

